



ATTENTION
OBSERVE PRECAUTIONS
FOR HANDLING
ELECTROSTATIC
DISCHARGE
SENSITIVE
DEVICES

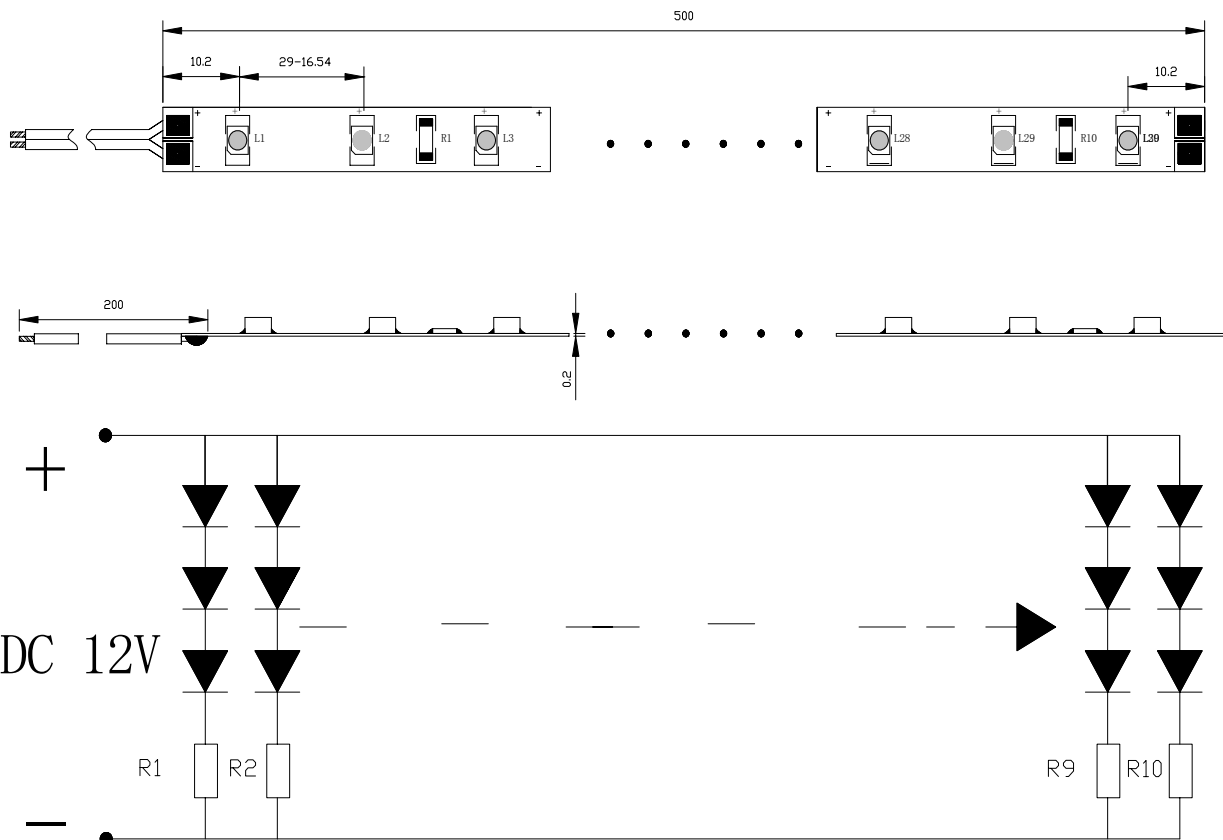
HL-3528H159W30K9N1-12 WARM WHITE



Features

- 500MMX8MM SMD LIGHT RIBBON (30-LED) .
- PRINTED CIRCUIT BOARD THICKNESS: 0.2MM
- WORKING VOLTAGE: 12V DC.
- WORKING CURRENT: 200MA.
- LED VIEW ANGLE(2 θ 1/2):120° .
- PACKAGE: 5meters / REEL.

Package Dimensions



Notes:

1. All dimension units are millimeters.
2. All dimension tolerance is ± 1 mm unless otherwise noted.

Absolute Maximum Rating at TA=25℃

Parameter	Symbol	Absolute Maximum Rating	Unit
Forward Current	IF	200	mA
Power Dissipation	PD	2.4	W
Electrostatic discharge	ESD	800	V
Operating Temperature	Topr	-25~+60	℃
Storage Temperature	Tstg	-40~+80	℃

Electrical / Optical Characteristics at TA=25℃

Parameter	Symbol	Condition	Min	Typ	Max	Unit
Forward Voltage DC	VF	IF=200mA	--	12	--	V
Dominant Wavelength	λ_D	IF=200mA	--	--	--	nm
Temperature Color	TC	IF=200mA	--	3500	--	k
Luminous flux	ϕ_V	IF=200mA	--	65	--	lm
Recommend Forward Current	IF(rec)	--	--	200	--	mA

Notes:Tolerance of measurement of luminous intensity±15%.